

Product Presentation For

WT-DR56

WATTE

[www.wattec.com](http://www.wattec.com)

[watte@fswatte.com](mailto:watte@fswatte.com)

Zhaoda Venture Middle Road, Shishan Town, Nanhai District, Foshan City

# COMPANY INTRODUCTION

## WHO WE ARE

WATTE Skylight has been deeply engaged in the skylight industry since 2012, with its headquarters located in Foshan, Guangdong. It focuses on customized solutions for villa skylights, balcony lift-up windows, and mobile sunrooms, integrating research and development, design, manufacturing, and marketing.

In 2022, WATTE Skylight became a participating unit in the Technical Specification for Skylight and Roof Window Engineering. At present, it has two production bases with a total area of 15,000 square meters and more than 70 patents.

Our products are exported to more than 60 countries, reaching developed regions such as Europe, the Middle East, and the United States.

**2012**  
since 2012

**15,000**  
15,000 SQM

**60**  
Exported Countries



# THREE MAIN PRODUCTS SOLUTION

SKYLIGHT   MOVABLE SUNROOM   LIFTING WINDOW

Through the villa skylight, balcony lift window, mobile sun room series products to provide users with one-stop customized services for the whole house



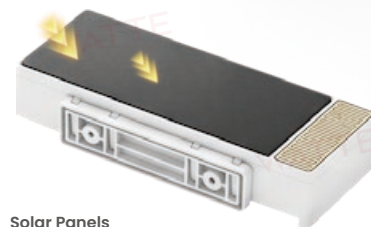
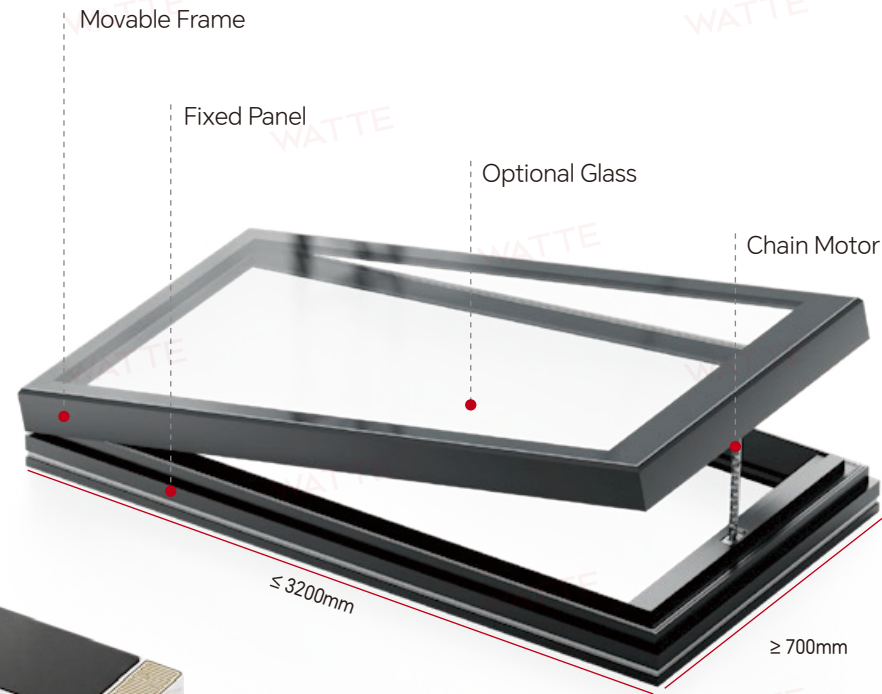
# WT-DR56

## CHAIN MOTOR TOP HUNG SKYLIGHT

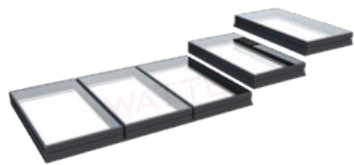
Single leaf area  $\leq 4\text{m}^2$

Single leaf width  $\geq 700\text{mm}$

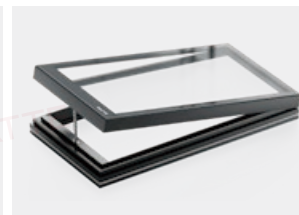
Single leaf height  $\leq 3200\text{mm}$



**Solar Panels**  
Provides limited power to the skylight



Solar panels



Opening stroke 300mm



seamless welding



Glass size can be customized

### OPENING METHOD

Top-hung opening

### INTELLIGENT CONFIGURATION

- Watte silent motor
- Wireless remote control
- LED ambient light
- Mobile phone remote control
- Smart home system
- Wireless solar rain sensor
- Hollow Honeycomb Blinds

### GLASS CONFIGURATION

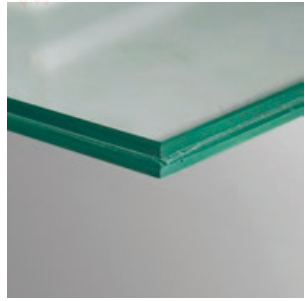
- 5G+24AH+4G+0.76pvb+4G
  - 5G+0.76pvb+5G
  - 8G+20AH+4G+0.76pvb+4G
  - 5G+27AH+5G
- Total thickness can be customized  $\leq 37\text{mm}$

● Standard ○ Optional

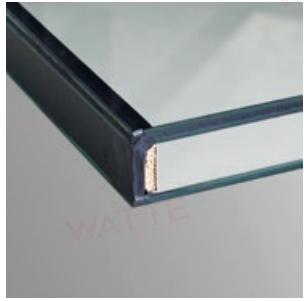
### COLORS



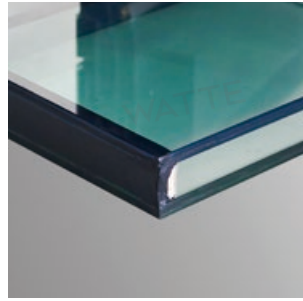
# OPTIONAL GLASSES



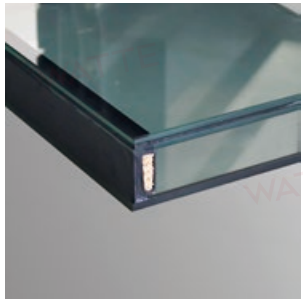
Double Glass



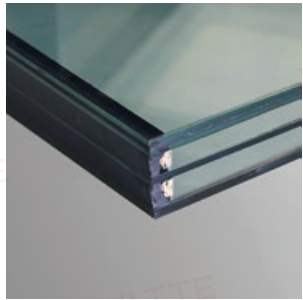
Triple Glass



Fourfold Glass



Triple Glass With LOW-E



Fourfold Glass With LOW-E

# INTELLIGENT



Remote Control



App Control



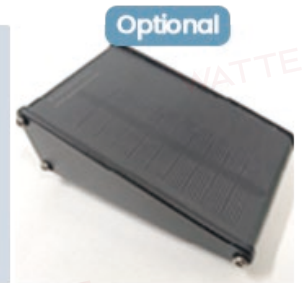
Wheel Controller



Control Panel

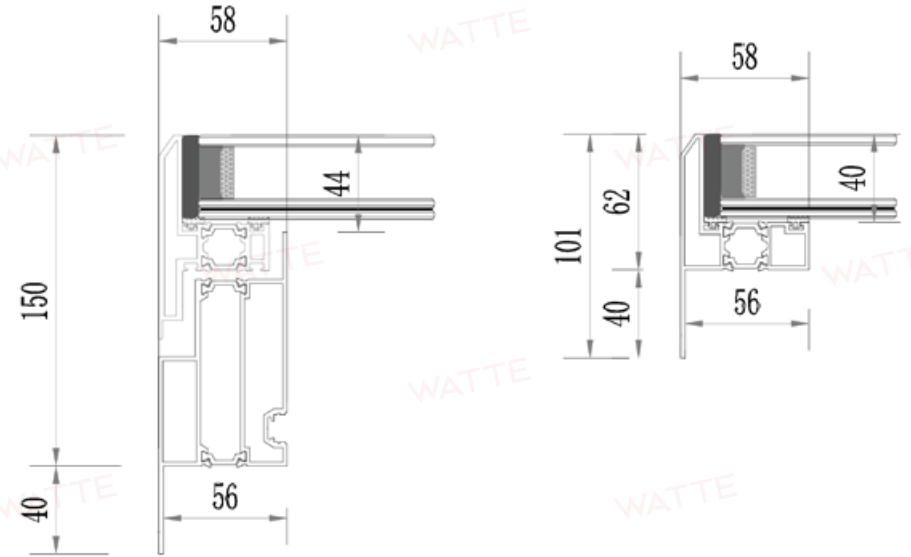
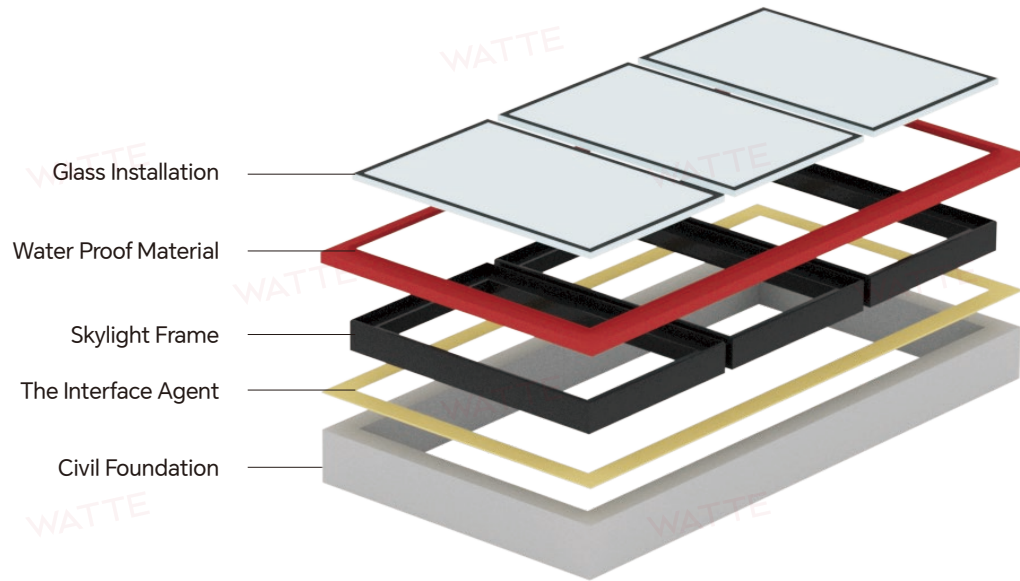


Air Detector



Rain Sensor

# SKYLIGHTS INSTALLATION



- measurement → re-check → leveling construction → power supply wiring → Ring beam brush interface agent
- Installation → Waterproof membrane construction → Glass installation → Skylight debugging → Decorative material closing

